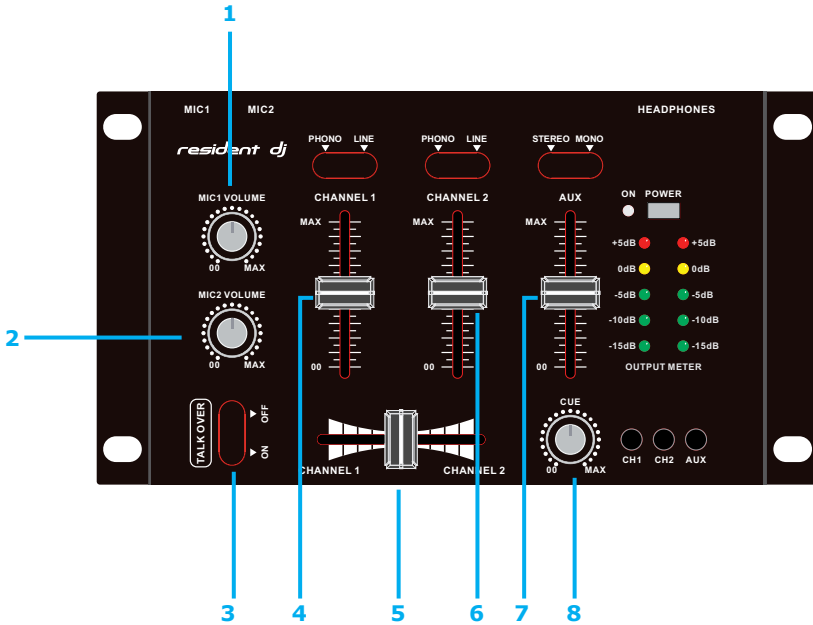


BEDIENFELDER UND ANSCHLÜSSE

Vordere Armatur



1. MIC 1:
2. MIC 1:
3. Talkover:
4. Channel 1:
5. Crossfader:
6. Channel 2:
7. AUX
8. PHONES:

SECURITY INSTRUCTIONS

Magnetic field

Caution! Do not locate sensitive high-gain equipment such as preamplifiers or tape decks directly above or below the unit. Because this amplifier has a high power, it has a strong magnetic field which can induce hum into unshielded devices that are located nearby. The field is strongest just above and below the unit. Locate the amplifier in the bottom of the rack and the preamplifier or other sensitive equipment at the top.



Warning: Risk of electric shock Do not open!

To prevent electric shock do not remove top or bottom covers. No user serviceable parts inside. Refer servicing to qualified servicing personnel.

Do not expose this equipment to rain or moisture!

SPECIFICATIONS

INPUT:

1,5 mV / 2 k Ω
3 mV / 47 k Ω
150 mV / 27 k Ω

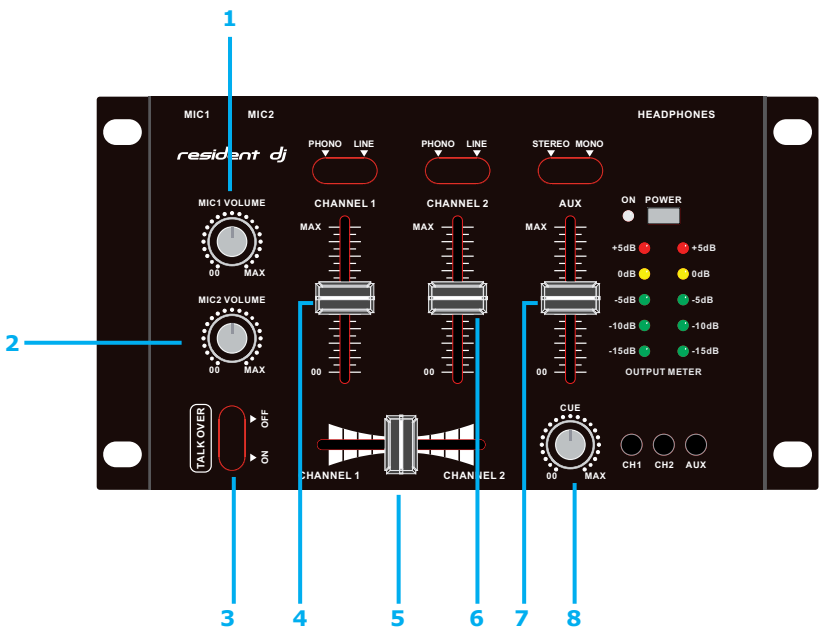
OUTPUT:

0 dB / 1 V 600 Ω

160 Ω

CONTROL PANEL AND CONNECTIONS

Front Panel



- 1. **MIC 1:** potentiometer for MIC1 volume adjustment.
- 2. **MIC 1:** potentiometer for MIC1 volume adjustment.
- 3. **Talkover:**
- 4. **Channel 1:**
- 5. **Crossfader:**
- 6. **Channel 2:**
- 7. **AUX**
- 8. **PHONES:**

